

Data sheet

Ball valves

Description



Nominal diameter: DN 15-600
Temperature: 0-180 °C
Nominal pressure: PN 16 / 25 / 40

Danfoss offers a PTFE/carbon steel stem packing box designed without deteriorating rubber materials and therefore complete tightness and unlimited life even at high and changing temperatures.

Operating costs at pump stations are low because of a low pressure drop due to optimum flow design.

The spring construction in combination with two carbon reinforced PTFE seat rings offer:

- Optimum tightness
- Controlled pressure against the ball
- Controlled operating torque.

The valves are ON/OFF valves.

Danfoss ball valves have been specially designed for district heating systems and other hot water systems, in which the water has been treated in order to avoid corrosion.

Having fully welded bodies, the valves meet the requirements for valves used in hot water systems thus offering a high degree of security.

Furthermore, the Danfoss ball valves are suitable for district cooling systems.

100% final inspection. Each valve is tested for tightness and high pressure according to DIN & ISO norms (EN 12266 part 1 & 2 and ISO 5208, respectively).

Dimensions and functionality etc. are tested according to EN 12266 part 1 & 2.

Danfoss ball valves are maintenance free.

Danfoss A/S is certified according to ISO 9001 and fulfil CE-PED.

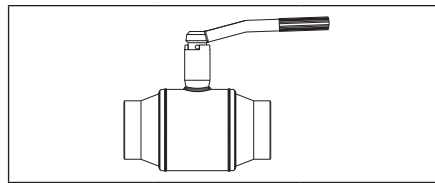
Furthermore certified according to ISO 14001 and OHSAS 18001.

Data sheet

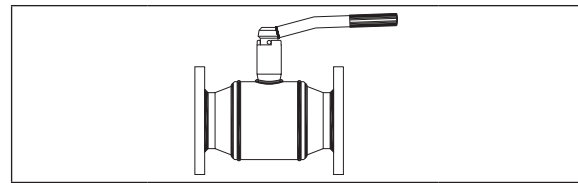
Ball valves

Ordering:

JIP-WW welded connection
or
JIP-FF flanged connection



DN mm	Code No. PN 25	Code No. PN 40
15	See table PN 40 to the right	065N0100
20		065N0105
25		065N0110
32		065N0115
40		065N0120
50		065N0125
65	065N4280	X
80	065N4285	
100	065N0140	
125	065N0745	
150	065N0750	
200	065N0755	

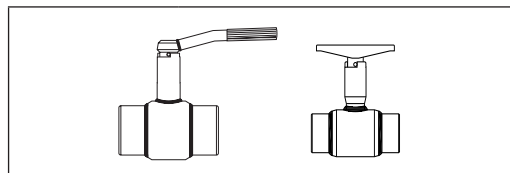


DN mm	Code No. PN 16	Code No. PN 25	Code No. PN 40
15	See table PN 40 to the right	See table PN 40 to the right	065N0300
20			065N0305
25			065N0310
32			065N0315
40			065N0320
50			065N0325
65	065N4282	065N4281	X
80	065N4287	065N4286	
100	065N0240	065N0340	
125	065N0845	065N0945	
150	065N0850	065N0950	
200	065N0855	065N0955	

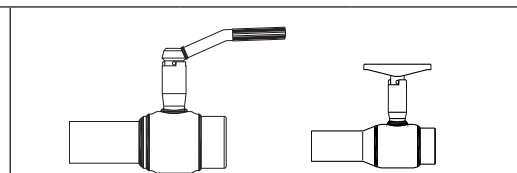
DN mm	Valve with worm gear	Valve with gear flange
	Code No. PN 25	Code No. PN 25
150	065N0151	065N0152
200	065N0156	065N0157
250	065N0161	065N0162
300	065N0166	065N0167
350	065N0171	065N0172
400	065N0176	065N0177
450	065N0178	065N0179
500	065N0181	065N0182
600	065N0186	065N0187

DN mm	Valve with worm gear	Valve with gear flange	Valve with worm gear	Valve with gear flange
	Code No. PN 16	Code No. PN 16	Code No. PN 25	Code No. PN 25
150	065N0251	065N0252	065N0351	065N0352
200	065N0256	065N0257	065N0356	065N0357
250	065N0261	065N0262	065N0361	065N0362
300	065N0266	065N0267	065N0366	065N0367
350	065N0271	065N0272	065N0371	065N0372
400	065N0276	065N0277	065N0376	065N0377
450	065N0278	065N0279	065N0378	065N0379
500	065N0281	065N0282	065N0381	065N0382

JIP-II internally threaded connection
or
JIP-IW internally threaded/welded connection



DN mm	Code No. PN 40 L-handle high stem	Code No. PN 40 T-handle low stem
15	065N0800	065N802
20	065N0805	065N807
25	065N0810	065N812
32	065N0815	X
40	065N0820	
50	065N0825	



DN mm	Code No. PN 40 L-handle high stem	Code No. PN 40 T-handle low stem
15	065N0900	065N904
20	065N0905	065N908
25	065N0910	065N914
32	065N0915	X
40	065N0920	
50	065N0925	

Data sheet
Ball valves

 JIP-FW
 flanged/welded connection

DN mm	Code No. PN 16	Code No. PN 25	Code No. PN 40
15	See table PN 40 to the right	See table PN 40 to the right	065N0700
20			065N0705
25			065N0710
32			065N0715
40			065N0720
50			065N0725
65	065N4284	065N4283	
80	065N4289	065N4288	
100	065N0540	065N0640	
125	065N0960	065N0975	
150	065N0965	065N0980	
200	065N0970	065N0985	

DN mm	Valve with worm gear	Valve with gear flange	Valve with worm gear	Valve with gear flange
	Code No. PN 16	Code No. PN 16	Code No. PN 25	Code No. PN 25
150	065N0551	065N0552	065N0651	065N0652
200	065N0556	065N0557	065N0656	065N0657
250	065N0561	065N0562	065N0661	065N0662
300	065N0566	065N0567	065N0666	065N0667
350	065N0571	065N0572	065N0671	065N0672
400	065N0576	065N0577	065N0676	065N0677
450	065N0578	065N0579	065N0678	065N0679
500	065N0581	065N0582	065N0681	065N0682

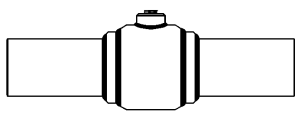
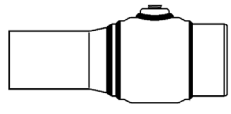
 JIP hot tap
 welded connection

DN mm		
	Valve	Valve with handle
	Code No. PN 25	Code No. PN 25
20	065N0106	065N4008
25	065N0111	065N4042
32	065N0116	065N4009
40	065N0121	065N4010
50	065N0126	065N4011
65	065N0131	065N4129
80	065N0136	065N4132
100	065N0141	065N0143

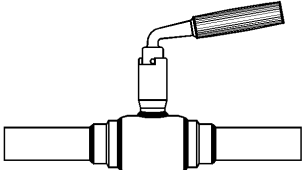
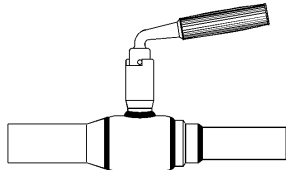
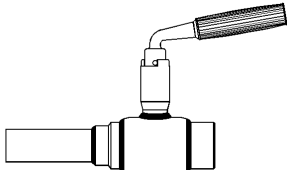
Data sheet

Ball valves

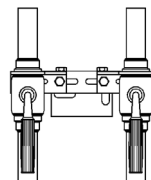
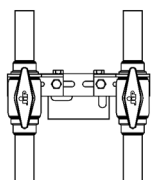
JIP-WW branching welded connection
or
JIP-IW branching internally threaded/welded connection

DN mm			
	Code No. PN 25	Code No. PN 40	Code No. PN 40
15	See table PN 40 to the right	065N2102	
20		065N2107	
25		065N2112	065N2113
32		065N2117	065N2118
40		065N2122	065N2123
50		065N2127	065N2128
65	065N2132	X	X
80	065N2137		
100	065N2142		
125	065N2147		
150	065N2152		
200	065N2157		

JIP-CC copper connection
or
JIP-WC welded/copper connection
or
JIP-IC internally threaded/copper connection
Temperature: 0-130 °C

							
DN mm	Code No. PN 10	Code No. PN 16	DN mm	Code No. PN 10	Code No. PN 16	Code No. PN 16	
15	See table PN 16 to the right	065N4058	15	See table PN 16 to the right	065N4060	065N4057	
20		065N4067	20		065N4063	065N4064	
25		065N4095	25		065N4084	065N4087	
32		065N4114	32		065N4107	065N4108	
40		065N4118	40		065N4117		
50	065N4124	-	50	065N4122	-	X	

JIP-CC twin valves copper connection
Temperature: 0-130 °C

DN mm				
	Code No. PN 16		Code No. PN 16	
20	065N4062		065N4076	
25	065N4020		065N4100	
32	065N4106		-	

Data sheet

Ball valves

Twin valves - single piped
JIP-WW welded connection
or
JIP-II internally threaded
connection
or
JIP-IW internally threaded/
welded connection

DN mm			
	Code No. PN 40	Code No. PN 40	Code No. PN 40
15	065N4001	065N0801	065N0901
20	065N4002	065N0806	065N0906
25	065N4003	065N0811	065N0911
32	065N4004	065N0816	065N0916
40	065N4005	065N0821	065N0921
50	065N2130	065N0826	065N0926

Twin valves - double piped
JIP-II internally threaded
connection including T-handle
45° version
or
JIP-IW internally threaded/
welded connection

DN mm			
	Code No. PN 40 with L-handle	Code No. PN 40 with T-handle 45°	Code No. PN 40
15	-	065N7022	-
20	065N2206	065N7024	065N2235
25	065N2219	065N7026	065N2240

Twin valves - double piped
JIP-II internally threaded
connection
or
JIP-IW internally threaded/
welded connection

DN mm		
	Code No. PN 40	Code No. PN 40
20	065N2209	065N2213
25	065N2220	065N2241

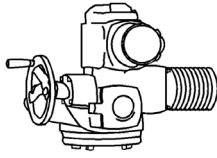
JIP-DD welded connection
both ends detachable
or
JIP-WE welded connection
detachable/closing cap and
chain

DN mm		
	Code No. PN 25	Code No. PN 25
15	065N4033	065N4022
20	065N4034	065N4023
25	065N4092	065N4024
32	065N4035	065N4025
40	065N4036	065N4026
50	065N4037	065N4027

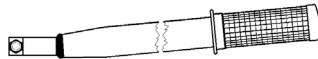
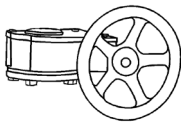
Data sheet

Ball valves

AUMA NORM electrical actuators for Danfoss ball valves without AUMA Matic or with AUMA Matic 3 x 400 VAC / 50 Hz, TP 110/001

DN mm		
	Code No.	Code No. with AUMA Matic AM 01.01
65 - 80	065N8199	065N8399
100	065N8200	065N8400
125 - 150	065N8205	065N8405
200	065N8215	065N8415
250	065N8220	065N8420
300 - 350	065N8225	065N8425
400	065N8235	065N8435
500 - 600	065N8240	065N8440

Ball valve - Accessories

			
Description	Code No.	Description	Code No.
Handle 125 - reduced bore	065N8000	Worm gear for DN 100 reduced	065N8100
Handle DN 150-200 - reduced bore	065N8001	Worm gear for DN 125/200 reduced	065N8115
		Worm gear for DN 250 reduced	065N8120
		Worm gear for DN 300/350 reduced	065N8125
		Worm gear for DN 400 reduced	065N8135
		Worm gear for DN 500/600 reduced	065N8140

Hot tap - Accessories

Locksaw complete		Locksaw (spare parts)	
Description	Code No.	Description	Code No.
JIP 20 drill	065N8006		
JIP 25 locksaw	065N8085	JIP 25 locksaw	065N8086
JIP 32 locksaw	065N8007	JIP 32 locksaw	065N8012
JIP 40 locksaw	065N8088	JIP 40 locksaw	065N8089
JIP 50 locksaw	065N8009	JIP 50 locksaw	065N8013
JIP 65 locksaw	065N8092	JIP 65 locksaw	065N8093
JIP 80 locksaw	065N8011	JIP 80 locksaw	065N8014
JIP 100 locksaw	065N8096	JIP 100 locksaw	065N8097

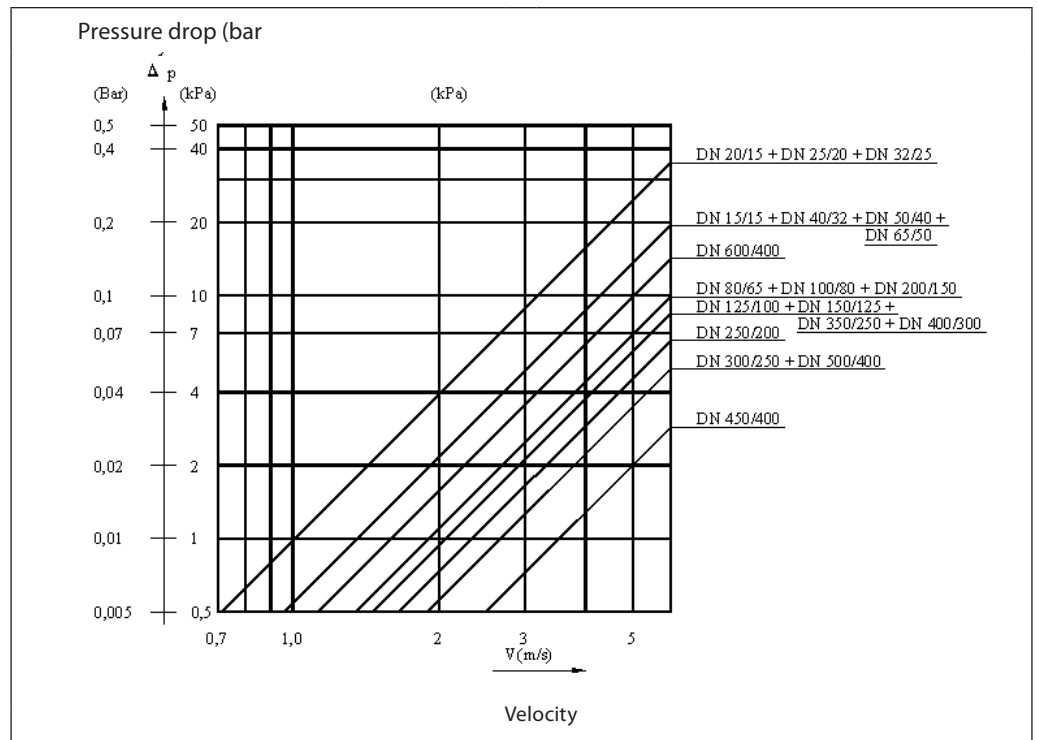
Hot tap - Accessories

Adapter		Tool box		Various tools	
Description	Code No.	Description	Code No.	Description	Code No.
JIP 32 adapter	065N8087	JIP 15 - 50	065N8003	Center drill	065N8016
JIP 50 adapter	065N8005	JIP 65 - 100	065N8004	Feed tool	065N8103
JIP 65 adapter	065N8091	X	X	Reduction wrench	065N8102
JIP 80 adapter	065N8094			Hot tapping tool	065N8130
JIP 100 adapter	065N8095			-	-

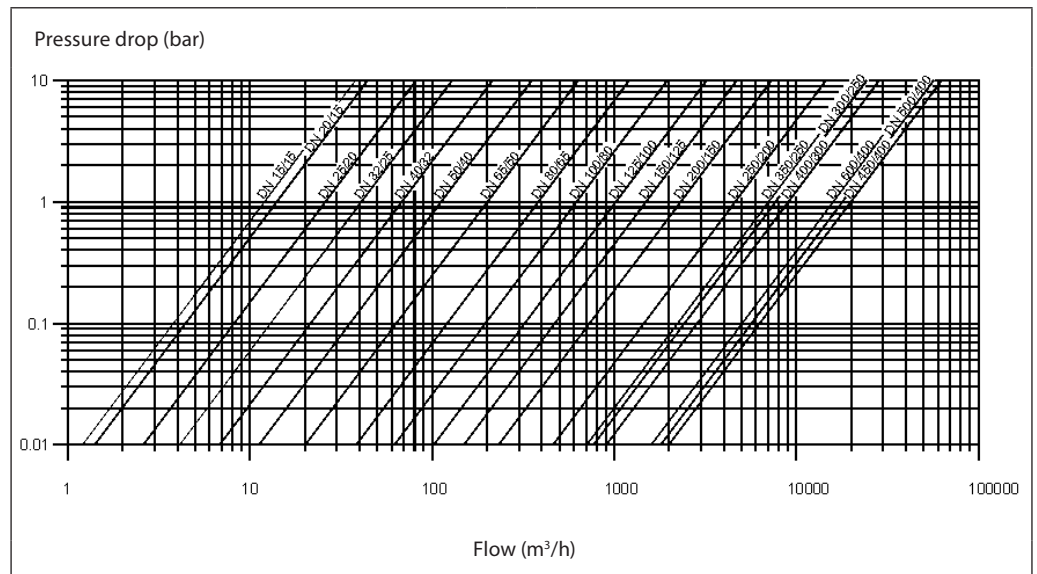
Data sheet

Ball valves

Technical data Pressure/velocity

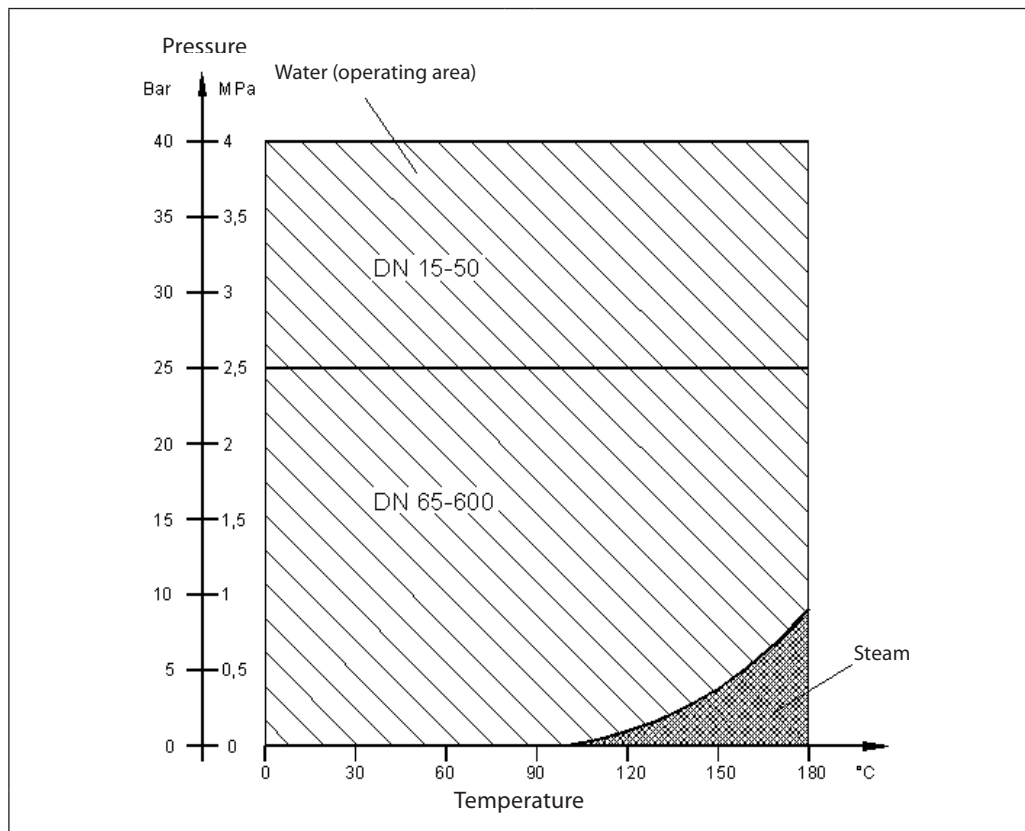


Pressure drop/flow



Kv values

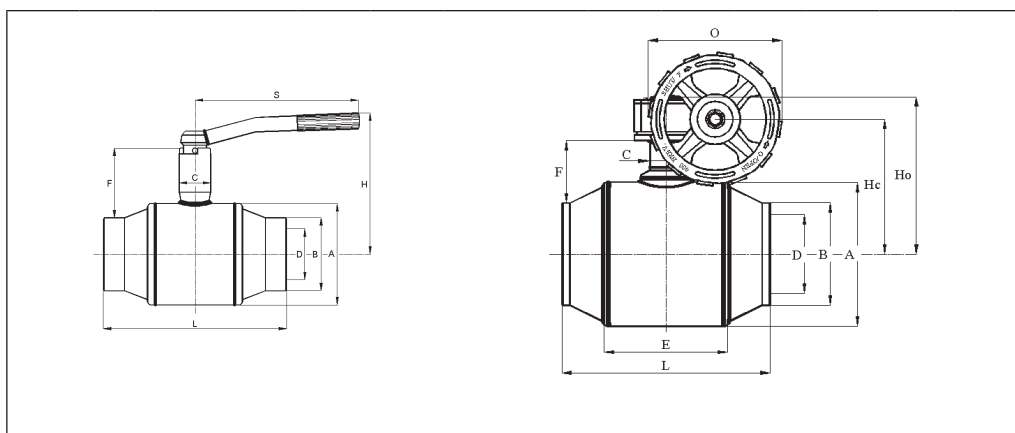
DN	K _v [m ³ /h]	DN	K _v [m ³ /h]
15	12	125	1,025
20	14	150	1,490
25	26	200	2,300
32	41	250	4,600
40	68	300	7,000
50	112	350	7,700
65	200	400	9,000
80	380	450	19,800
100	620	500	18,000
-	-	600	16,000

Pressure/temperature

Material

Welded ends and internally threaded ends	St. 37.0	Flanged ends	C 22.8
Body	St. 37.0	Body	St. 37.0
Stem	Stainless steel	Stem	Stainless steel
Ball	Stainless steel	Ball	Stainless steel
Seat rings	Carbon reinforced PTFE	Seat rings	Carbon reinforced PTFE
Seals	PTFE/Graphite	Seals	PTFE/Graphite

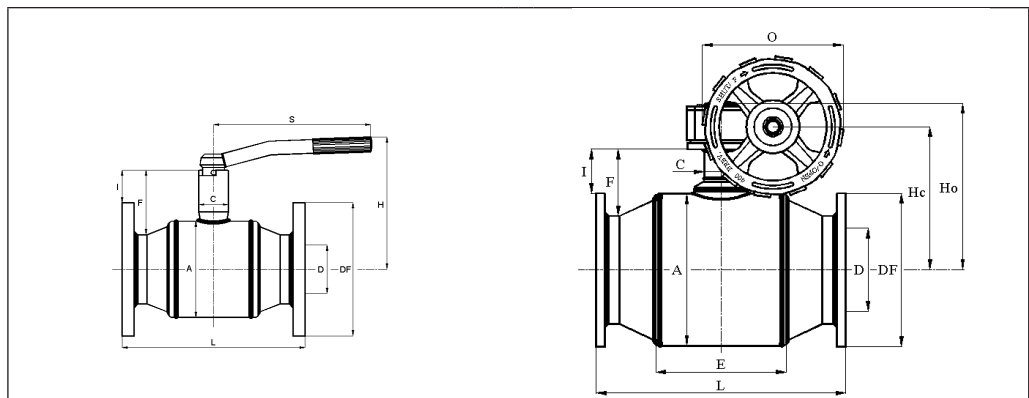
Dimensions

JIP-WW welded connection:



DN	A	B	D	L	H	Hc	Ho	E	F	C	S	O	kg
PN 40													
15	42.4	21.3	15	230	120	-	-	-	61	25	115	-	1.0
20	42.4	26.9	15	230	120	-	-	-	58	25	115	-	1.0
25	48.3	33.7	20	230	125	-	-	-	56	25	115	-	1.2
32	60.3	42.4	25	260	130	-	-	-	56	25	115	-	1.5
40	76.1	48.3	32	260	130	-	-	-	54	35	165	-	2.3
50	76.1	60.3	40	300	137	-	-	-	54	35	165	-	2.8
PN 25													
65	108	76.1	50	260	165	-	-	-	73	35	210	-	4.6
80	127	88.9	65	270	195	-	-	-	88	39	260	-	6.8
100	159	114.3	80	290	220	-	-	-	105	50	260	-	12.2
125	194	139.7	100	315	215	235	280	170	120	60	350	200	19
150	219	168.3	125	340	240	260	305	220	130	60	650	200	29
200	273	219.1	150	390	260	280	325	255	126	60	650	200	44
250	356	273.0	200	530	-	385	445	330	181	88	-	300	132
300	457	323.9	250	660	-	435	495	390	199	100	-	400	227
350	457	355.6	250	760	-	435	495	390	183	100	-	400	234
400	521	406.4	300	820	-	515	570	480	220	140	-	450	395
450	711	457.2	400	1,220	-	615	670	690	297	168	-	450	860
500	711	508.0	400	1,220	-	615	670	690	272	168	-	450	870
600	711	610.0	400	1,500	-	615	670	690	221	168	-	450	916
DN 250 - DN 600 - dimensions and weight are incl. worm gear - weight based on PN 40/25													

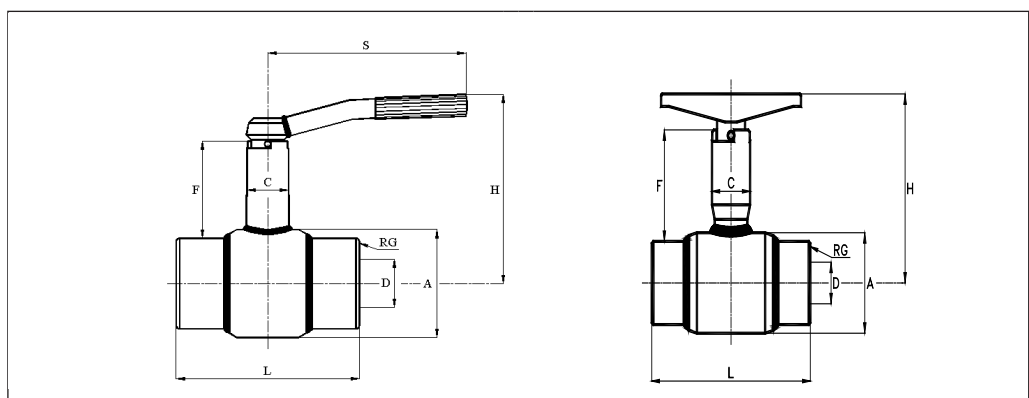
JIP-FF flanged connection



DN	A	D	PN16			PN40			H	Hc	Ho	E	F	C	S	O	Kg
			L	DF	I	L	DF	I									
15	42.4	15	See table PN 40 to the right			130	95	21	120	-	-	-	58	25	115	-	2.2
20	42.4	15				150	105	19	120	-	-	-	58	25	115	-	2.9
25	48.3	20				160	115	30	125	-	-	-	70	25	115	-	3.5
32	60.3	25				180	140	23	140	-	-	-	72	25	115	-	4.8
40	76.1	32				200	150	36	150	-	-	-	87	35	165	-	6.5
50	88.9	40				230	165	36	180	-	-	-	88	35	165	-	8.7
			PN 16			PN 25											
65	108	50	270	185	18	290	185	18	165	-	-	-	73	35	210	-	11
80	127	65	280	200	32	310	200	32	195	-	-	-	88	39	260	-	14
100	159	80	300	220	52	350	235	45	220	-	-	-	105	50	260	-	24
125	194	100	325	250	65	400	270	55	215	235	280	170	120	60	350	200	35
150	219	125	350	285	72	480	300	64	240	260	305	220	130	60	650	200	52
200	273	150	400	340	66	600	360	56	260	280	325	255	126	60	650	200	82
250	356	200	650	405	115	730	425	105	-	385	445	330	181	88	-	300	180
300	457	250	750	460	131	850	485	119	-	435	495	390	199	100	-	400	291
350	457	250	850	520	101	980	555	84	-	435	495	390	183	100	-	400	328
400	521	300	1,100	580	133	1,100	620	113	-	515	570	470	220	140	-	450	518
450	711	400	1,395	640	206	1,400	670	191	-	615	670	690	297	168	-	450	1019
500	711	400	1,400	715	169	1,400	730	161	-	615	670	690	272	168	-	450	1049

DN 250 - DN 500 - dimensions and weight are incl. worm gear - weight based on PN 40/25

JIP-II internally threaded connection:

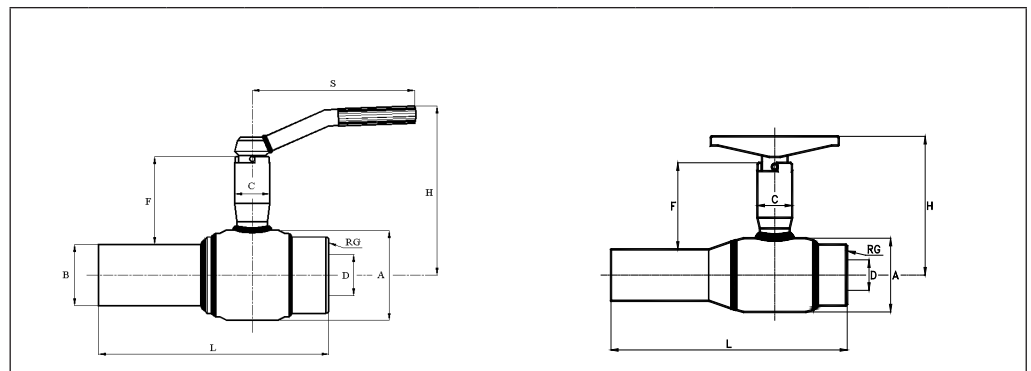


DN	A	RG	D	L	H low	F low	H	F	C	S	Kg
15	42.4	1/2"	15	90	97	35	120	55	25	115	0.6
20	42.4	3/4"	15	90	97	35	120	55	25	115	0.8
25	48.3	1"	20	100	104	35	125	55	25	115	0.9
32	60.3	1 1/4"	25	105	-	-	130	55	25	115	1.2
40	76.1	1 1/2"	32	120	-	-	150	80	35	165	2.2
50	88.9	2"	40	150	-	-	160	80	35	165	3.3

Data sheet

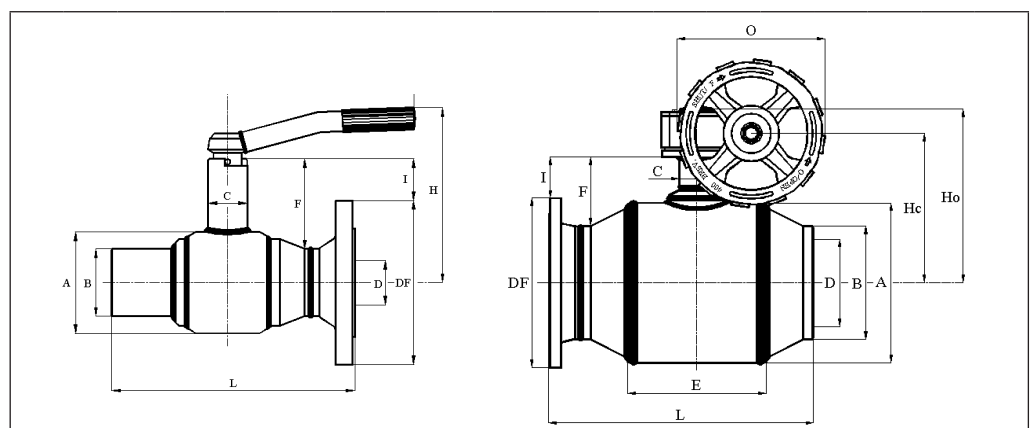
Ball valves

JIP-IW internally threaded/welded connection:



DN	A	B	RG	D	L	H low	F low	H	F	C	S	Kg
15	42.4	21.3	1/2"	15	160	97	35	120	55	25	115	0.9
20	42.4	26.9	3/4"	15	160	97	35	120	55	25	115	0.9
25	48.3	33.7	1"	20	165	104	35	125	55	25	115	1.0
32	60.3	42.4	1 1/4"	25	183	-	-	130	55	25	115	1.4
40	76.1	48.3	1 1/2"	32	190	-	-	150	80	35	165	2.3
50	88.9	60.3	2"	40	225	-	-	160	80	35	165	3.3

JIP-FW flanged/welded connection:



DN	A	B	D	L	DF	I	L	DF	I	H	Hc	Ho	E	F	C	S	O	Kg
				PN 16			PN 40											
15	42.4	21.3	15	See table PN 40 to the right	180	95	21	120	-	-	-	58	25	115	-	1.7		
20	42.4	26.9	15		190	105	19	120	-	-	-	58	25	115	-	2.0		
25	48.3	33.7	20		195	115	30	128	-	-	-	70	25	115	-	2.4		
32	60.3	42.4	25		220	140	23	140	-	-	-	72	25	115	-	3.4		
40	76.1	48.3	32		230	150	36	150	-	-	-	87	35	165	-	4.3		
50	88.9	60.3	40		265	165	36	160	-	-	-	88	35	165	-	5.9		
				PN 16			PN 25											
65	108	76.1	50	265	185	18	265	185	18	165	-	-	-	73	35	210	-	10.1
80	127	88.9	65	275	200	32	275	200	32	195	-	-	-	88	39	260	-	12.1
100	159	114.3	80	295	220	52	295	235	45	220	-	-	-	105	50	260	-	18.7
125	194	139.7	100	320	250	65	320	270	55	215	235	280	170	120	60	350	200	26
150	219	168.3	125	345	285	72	345	300	64	240	260	305	220	130	60	650	200	42
200	273	219.1	150	395	340	66	395	360	56	260	280	325	255	126	60	650	200	65
250	356	273.0	200	590	405	115	590	425	105	-	385	445	330	181	88	-	300	156
300	457	323.9	250	705	460	131	750	485	119	-	435	495	390	199	100	-	400	207
350	457	355.6	250	805	520	101	860	555	84	-	435	495	390	183	100	-	400	281
400	521	406.4	300	960	580	133	930	620	113	-	515	570	480	220	140	-	450	457
450	711	457.2	400	1,310	640	206	1,330	670	191	-	615	670	690	297	168	-	450	945
500	711	508.0	400	1,310	715	169	1,345	730	161	-	615	670	690	272	168	-	450	960

DN 250 - DN 500 - dimensions and weight are incl. worm gear - weight based on PN 40/25

JIP hot tap
welded connection

DN	A	B	D	L	H	H w. handle	Kg
PN 25							
20	42.4	24.0	15	125	34	120	0.6
25	60.3	33.7	25	145	46	125	1.3
32	60.3	42.4	25	145	46	130	1.2
40	88.9	48.3	40	200	57	150	3.5
50	88.9	60.3	40	200	57	160	3.4
65	114.3	76.1	50	260	70	185	5.1
80	133.0	88.9	65	265	80	205	6.7
100	159.0	114.3	80	275	92	220	11.3

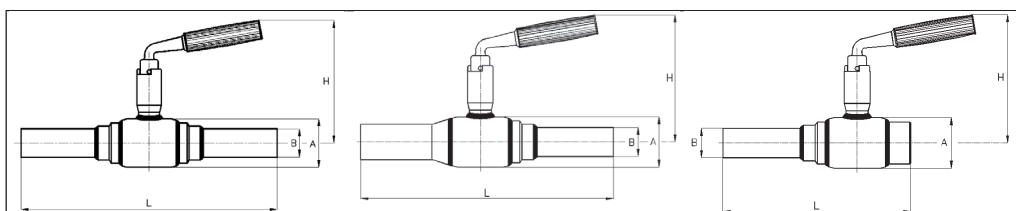
JIP-WW branching
welded connection
OR
JIP-IW branching internally
threaded /welded connection

DN	A	B	D	LWW	LIW	H	Kg
PN 40							
15	42.4	21.3	15	230	-	34	0.6
20	42.4	26.9	15	230	-	34	0.6
25	48.3	33.7	20	230	165	36	0.8
32	60.3	42.4	25	260	183	46	1.2
40	76.1	48.3	32	260	190	51	1.8
50	88.9	60.3	40	300	225	57	2.8
PN 25							
65	114.3	76.1	50	260	X	70	4.4
80	133.0	88.9	65	270		80	5.7
100	159.0	114.3	80	290		92	10.6
125	193.7	139.7	100	315		140	17.9
150	219.1	168.3	125	340		160	27.5
200	273.0	219.1	150	390		185	42.3

Data sheet

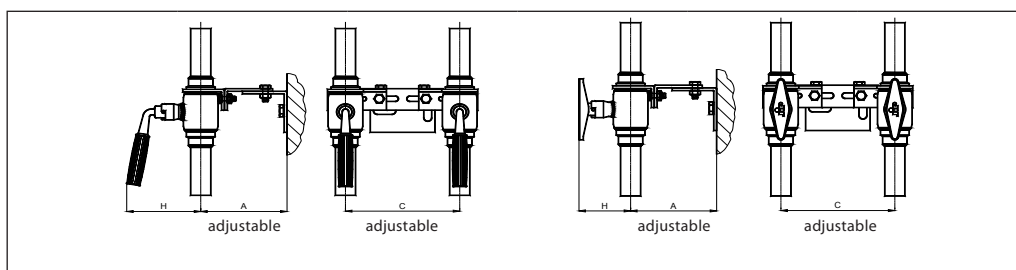
Ball valves

JIP-CC copper connection
or
JIP-WC welded/copper
connection
or
JIP-IC internally threaded/
copper connection



DN	A	B	L CC	L WC	L IC	H	Kg
PN 16							
15	42.4	-	245	246	168	120	0.93
20	42.4	22	255	242	172	120	0.93
25	48.3	28	255	245	180	125	1.10
32	60.3	35	260	270	185	130	1.45
40	76.1	42	260	260	-	150	2.50
PN 10							
50	88.9	54	300	305	-	160	3.20

JIP-CC twin valves
copper connection



DN	A	C	H L-handle	H T-handle red/blue	Kg
15	100 - 145	120 - 200	-	-	2.83
20	100 - 145	120 - 200	100	70	2.75
25	100 - 145	120 - 200	105	70	3.00
32	115 - 160	120 - 200	110	-	3.90

Data sheet

Ball valves

Twin valves - single piped
 JIP-WW welded
 or
 JIP-II internally threaded
 or
 JIP IW internally threaded/
 welded connection

DN	A	C	H hex.	H L-handle	H T-handle	Kg
PN 40						
15	100 - 145	120 - 200	65	100	70	2.2
20	100 - 145	120 - 200	65	100	70	2.2
25	100 - 145	120 - 200	70	105	75	2.3
32	115 - 160	120 - 200	75	110	-	3.5
40	115 - 160	120 - 200	100	135	-	5.1
50	115 - 160	120 - 200	105	140	-	7.3

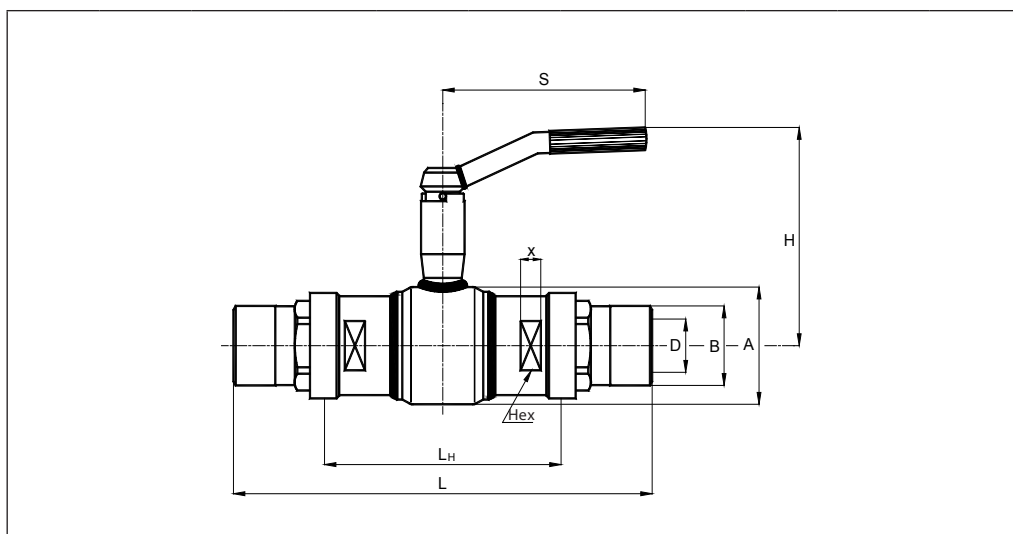
JIP twin valves - double piped
 JIP-II internally threaded
 or
 JIP IW internally threaded/
 welded connection

DN	A	C	H hex.	H L-handle	H T-handle 45°	Kg
PN 40						
15	100 - 145	58	-	-	70	2.2
20	100 - 145	58	65	120	70	2.3
25	100 - 145	58	68	125	75	2.3

Data sheet

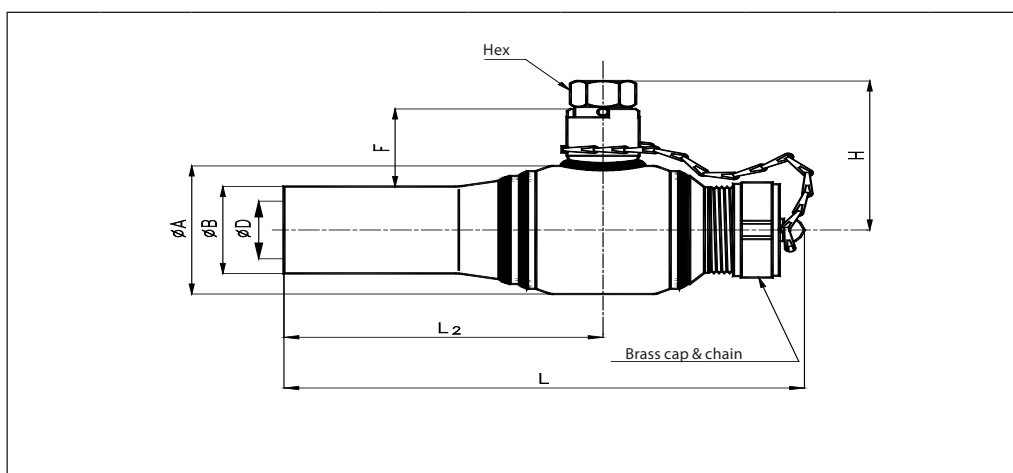
Ball valves

JIP-DD welded connection
both ends detachable



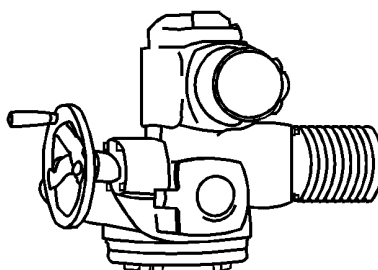
DN	A	B	D	L	L _H	H	S	Hex.	X	Kg
PN 25										
15	42.4	21.3	15	210	98	120	115	-	-	1.2
20	42.4	26.9	15	235	110	120	115	-	-	1.2
25	48.3	33.7	20	245	128	125	115	36	14	1.6
32	60.3	42.4	25	270	150	110	115	42	14	2.2
40	76.1	48.3	32	295	168	150	165	50	16	3.9
50	88.9	60.3	40	330	186	160	165	65	16	4.6

JIP-WE welded connection
detachable / closing cap and
chain



DN	A	B	D	F	L	L ₂	H	S	Hex.	Kg
PN 25										
15	42.4	21.3	15	40	180	115	65	115	19	1.0
20	42.4	26.9	15	37	180	115	65	115	19	1.0
25	48.3	33.7	20	37	190	115	67	115	19	1.5
32	60.3	42.4	25	39	200	130	70	115	19	2.0
40	76.1	48.3	32	53	210	130	98	165	27	3.7
50	88.9	60.3	40	52	250	150	105	165	27	4.4

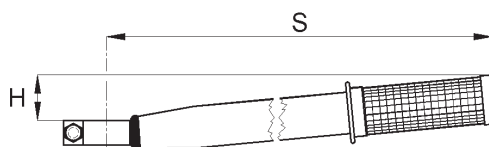
AUMA NORM electrical actuators for Danfoss ball valves 3 x 400 VAC / 50 Hz, TP 110/001



For Danfoss ball valves		3 x 400 VAC 50 Hz (S2-15 min.)
DN	Type	Operating time for 90° turn
65 - 80	SG 05.1	16
100	SG 07.1	32
125 - 150	SG 10.1	32
200	SA 07.5 - GS 80.3	36
250	SA 07.5 + GS 100.3 + VZ 4.3	69
300 - 350	SA 07.5 + GS 125.3 + VZ 4.3	142
400	SA 07.5 + GS 160.3 + GZ 160.3	147
500 - 600	SA 10.1 + GS 160.3 + GZ 160.3	207
65 - 150	Type SG 05.1 - SG 10.1 std. design	Terminal plan TP 110/001
200 - 600	Type SA with Auma worm gear type GS in std. design	Terminal plan TP 110/001

The actuator is equipped with:
 2 limit switches - 1 for opening / closing
 2 torque switches, 1 for opening / closing
 Heater
 Blinker switch for operating phase
 Hand wheel
 Thermo switch

The actuators can be equipped with various accessories.
 Control and regulating unit AUMA Matic in the basis design can be supplied.
 The actuators are in standard IP 67, but at an additional price they can be delivered in IP 68.
 For other mains voltages than 3 x 400V/50Hz or additional questions please contact us.

Handles


DN	S	H
125	350	20
150 - 200	650	20

Danfoss påtager sig intet ansvar for mulige fejl i kataloger, brochurer og andet trykt materiale. Danfoss forbeholder sig ret til uden forudgående varsel at foretage ændringer i sine produkter, herunder i produkter, som allerede er i ordre, såfremt dette kan ske uden at ændre allerede aftalte specifikationer. Alle varemærker i dette materiale tilhører de respektive virksomheder. Danfoss og Danfoss-logoet er varemærker tilhørende Danfoss A/S. Alle rettigheder forbeholdes.


Danfoss A/S

Bodebjergvej 22
 DK-5620 Glamsbjerg
 Telephone: +45 7488 2222
 Fax: +45 6472 3322

E-mail: jip@danfoss.com
 Homepage: www.heating.danfoss.com